

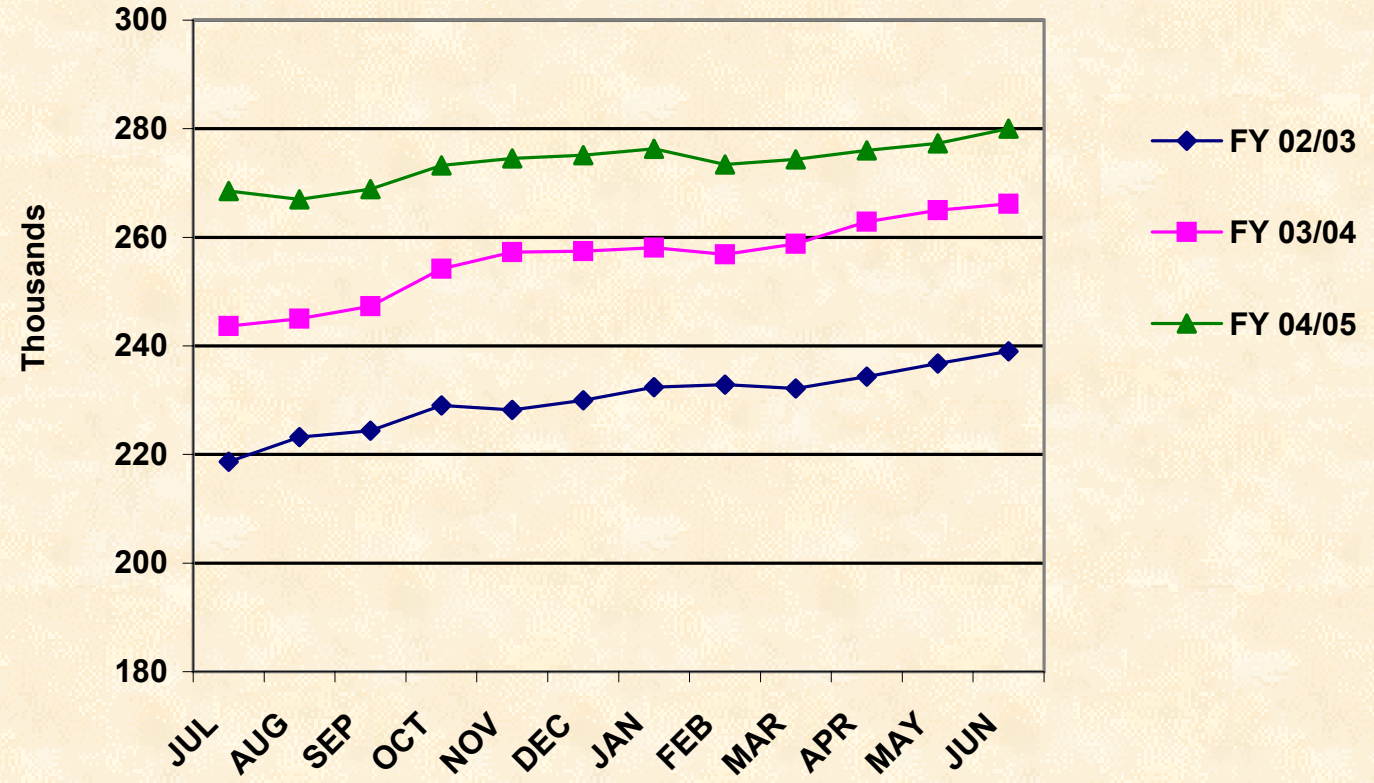
FOOD STAMP CASES BY FISCAL YEAR

STATEWIDE MONTHLY TOTALS

MONTH	FY 00/01	FY 01/02	FY 02/03	FY 03/04	FY 04/05
JUL	177,731	191,660	218,661	243,677	268,507
AUG	180,558	198,160	223,230	244,982	267,012
SEP	181,196	200,112	224,357	247,310	268,877
OCT	182,493	204,002	229,028	254,211	273,271
NOV	185,317	207,674	228,197	257,250	274,545
DEC	184,455	208,800	230,002	257,427	275,136
JAN	183,879	210,902	232,422	258,093	276,308
FEB	183,690	210,834	232,867	256,883	273,398
MAR	185,099	210,138	232,173	258,794	274,342
APR	185,091	211,756	234,357	262,864	275,996
MAY	187,418	214,085	236,733	265,018	277,280
JUN	189,264	215,577	238,974	266,189	280,039
Average	183,849	206,975	230,083	256,058	273,726
Totals	2,206,191	2,483,700	2,761,001	3,072,698	3,284,711

FOOD STAMP CASES BY STATE FISCAL YEAR

Statewide Monthly Totals



FOOD STAMP RECIPIENTS BY FISCAL YEAR

STATEWIDE MONTHLY TOTALS

MONTH	FY 00/01	FY 01/02	FY 02/03	FY 03/04	FY 04/05
JUL	465,733	502,171	577,909	639,699	691,851
AUG	473,404	521,075	589,084	641,678	686,291
SEP	474,808	526,454	591,553	646,446	691,533
OCT	479,189	537,179	604,816	662,237	701,716
NOV	488,196	547,245	600,518	668,144	703,904
DEC	484,488	550,461	605,568	666,949	704,665
JAN	482,561	556,824	612,422	669,067	706,561
FEB	481,560	556,430	612,373	664,544	696,852
MAR	486,049	553,096	609,505	668,074	699,092
APR	486,229	557,614	615,988	678,049	702,829
MAY	492,584	564,578	621,031	682,388	705,451
JUN	496,503	568,883	626,707	685,202	712,074
Average	482,609	545,168	605,623	664,373	700,235
Totals	5,791,304	6,542,010	7,267,474	7,972,477	8,402,819

FOOD STAMP RECIPIENTS BY STATE FISCAL YEAR

Statewide Monthly Totals

